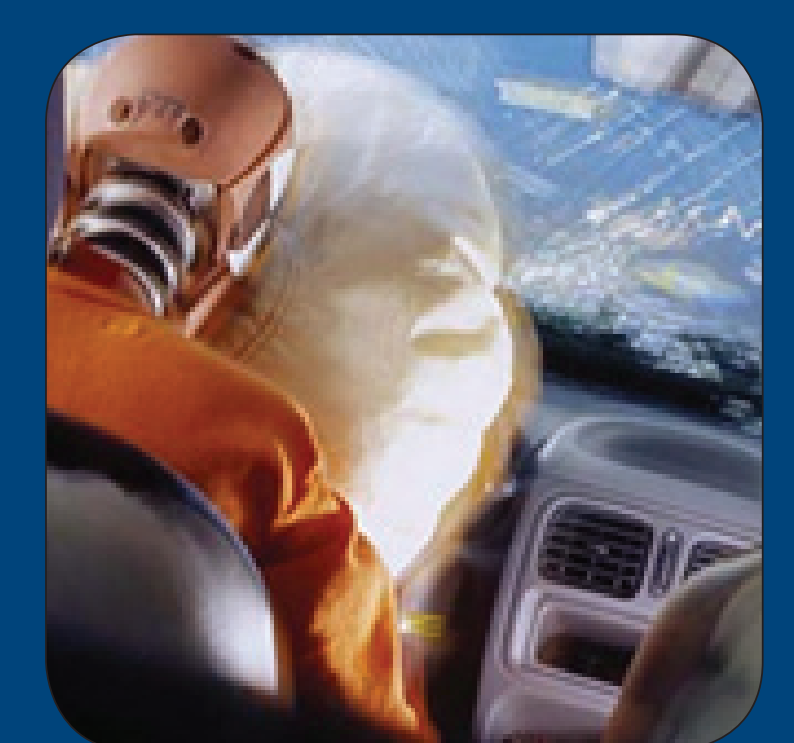


Impact Assessment

In the impact assessment, the euroFOT functions' impact on safety, throughput, the environment and driver behaviour are determined from the FOT data. Performance indicators, situational variables and events of all kinds are defined and harmonised taking into account the differences in test-setup and sensors between the Vehicle Management Centres. After the enormous amount of data has been processed, the indicators are calculated. Then the difference between the treatment phase and the baseline phase are tested for significance. The effects for the different indicators are combined and scaled to EU level, using databases with traffic conditions and crash statistics from different EU countries. Safety impacts are determined in terms of the reduction of accidents, injuries and fatalities. Traffic efficiency impacts are determined in terms of travel time and accident-related congestion. And finally, environmental effects are determined in terms of fuel consumption and CO₂ emissions.



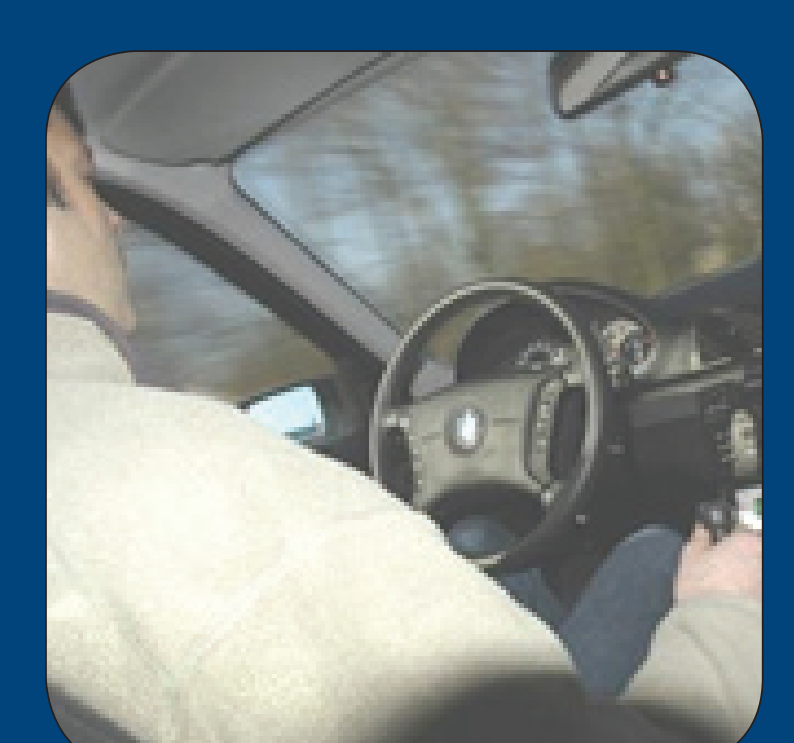
safety



throughput



environment



driver behaviour

